

RX 70 Technical Data

Diesel and LPG Forklift Trucks

[RX 70-40](#)

[RX 70-45](#)

[RX 70-50](#)

[RX 70-50/600](#)





				STILL	STILL	STILL	STILL	STILL	STILL	STILL	STILL			
Features	1.1	Manufacturer												
	1.2	Manufacturer's model designation		RX 70-40	RX 70-40 T	RX 70-45	RX 70-45 T	RX 70-50	RX 70-50 T	RX 70-50/600	RX 70-50/600 T			
	1.2.1	Manufacturer's type designation		7331	7335	7332	7336	7333	7337	7334	7338			
	1.3	Drive		Diesel	LPG	Diesel	LPG	Diesel	LPG	Diesel	LPG			
	1.4	Operation		Seated	Seated	Seated	Seated	Seated	Seated	Seated	Seated			
	1.5	Rated capacity	Q	kg	4000	4000	4500	4500	4999	4999	5000	5000		
	1.6	Load centre	c	mm	500	500	500	500	500	500	600	600		
	1.8	Load distance	x	mm	540	540	540	540	540	540	550	550		
	1.9	Wheel base	y	mm	2005	2005	2005	2005	2070	2070	2125	2125		
Weights	2.1	Service weight (incl. battery)			kg	6076	6076	6278	6278	6590	6590	7174	7174	
	2.2	Axle load, laden	front/rear		kg	8896/1180	8896/1180	9632/1146	9632/1146	10468/1122	10468/1122	11014/1160	11014/1160	
	2.3	Axle load, unladen	front/rear		kg	2821/3255	2821/3255	2798/3480	2798/3480	2955/3635	2955/3635	3308/3866	3308/3866	
Tyres/chassis	3.1	Tyres				Superelastic	Superelastic	Superelastic	Superelastic	Superelastic	Superelastic	Superelastic		
	3.2	Tyre size	front		mm	250-15	250-15	28 x 12.5-15	28 x 12.5-15	28 x 12.5-15	28 x 12.5-15	28 x 12.5-15		
	3.2	Tyre size	rear		mm	250-15	250-15	250-15	250-15	250-15	250-15	250-15		
	3.5	Number of wheels (x = driven)		front/rear			2x/2	2x/2	2x/2	2x/2	2x/2	2x/2	2x/2	
	3.6	Track width		front/rear	b ₁₀ /b ₁₁	mm	1136/1120	1136/1120	1210/1120	1210/1120	1210/1120	1210/1120	1210/1120	
	4.1	Tilt of mast/fork carriage		forward/backward	α/β	°	6/7	6/7	6/7	6/7	6/7	6/7	6/7	
Basic dimensions	4.2	Height		mast lowered	h ₁	mm	2400	2400	2400	2400	2400	2400	2400	
	4.3	Free lift			h ₂	mm	160	160	160	160	160	160	160	
	4.4	Lift			h ₃	mm	3180	3180	3180	3180	3180	2980	2980	
	4.5	Height		mast raised	h ₄	mm	4187	4187	4187	4187	4187	4137	4137	
	4.7	Height over overhead guard (cab)			h ₆	mm	2320	2320	2300	2300	2300	2300	2300	
	4.8	Seat height rel. to SIP			h ₇	mm	1298	1298	1298	1298	1298	1298	1298	
	4.12	Coupling height			h ₁₀	mm	496	496	496	496	496	496	496	
	4.19	Overall length			l ₁	mm	4027	4027	4071	4071	4098	4098	4368	4368
	4.20	Length including fork backs			l ₂	mm	3027	3027	3071	3071	3098	3098	3168	3168
	4.21	Overall width			b ₁	mm	1380	1380	1506/1380 ¹	1506/1380 ¹	1506/1380 ¹	1506/1380 ¹	1506/1380 ¹	1506/1380 ¹
	4.22	Fork dimensions			s/e/l	mm	50/120/1000	50/120/1000	50/120/1000	50/120/1000	50/120/1000	50/120/1000	50/120/1000	
	4.23	Fork carriage ISO 2328, Class/Form A, B					Cl. III, Form A	Cl. III, Form A	Cl. III, Form A	Cl. III, Form A	Cl. III, Form A	Cl. III, Form A	Cl. III, Form A	
	4.24	Fork carriage width			b ₃	mm	1310	1310	1310	1310	1310	1310	1310	
	4.31	Ground clearance under mast, laden			m ₁	mm	140	140	140	140	140	140	140	
	4.32	Ground clearance, centre of wheel base			m ₂	mm	165	165	165	165	165	165	165	
	Performance data	4.34.1	Working aisle width with pallet 1000 x 1200 crosswise			A _{st}	mm	4401	4401	4441	4441	4470	4470	4539
4.34.2		Working aisle width with pallet 800 x 1200 lengthways			A _{st}	mm	4601	4601	4641	4641	4670	4670	4739	4739
4.35		Turning radius			W _a	mm	2661	2661	2701	2701	2730	2730	2789	2789
4.36		Smallest pivot point distance			b ₁₃	mm	737	737	737	737	746	746	754	754
5.1		Driving speed	laden/unladen		km/h	21/21	21/21	21/21	21/21	21/21	21/21	21/21	21/21	
5.2		Lifting speed	laden/unladen		m/s	0.59/0.59	0.59/0.59	0.50/0.54	0.50/0.54	0.50/0.54	0.50/0.54	0.50/0.54	0.50/0.54	
5.3	Lowering speed	laden/unladen		m/s	0.50/0.50	0.50/0.50	0.50/0.50	0.50/0.50	0.50/0.50	0.50/0.50	0.50/0.50	0.50/0.50		
5.5	Traction	laden/unladen		N	22210/20010	22210/20010	22160/20130	22160/20130	22100/21830	22100/21830	22060/22150	22060/22150		
5.7	Gradeability	laden/unladen		%	22/35	22/33	21/34	21/32	20/33	20/31	19/32	19/30		
5.9	Acceleration time	laden/unladen		s	5.2/4.7	5.1/4.6	5.5/4.8	5.4/4.7	5.9/4.9	5.6/4.8	6.2/5.0	5.8/4.9		
5.10	Service brake					Mechanical/hydraulic	Mechanical/hydraulic	Mechanical/hydraulic	Mechanical/hydraulic	Mechanical/hydraulic	Mechanical/hydraulic	Mechanical/hydraulic		
IC engine	7.1	Engine manufacturer				Deutz	Linde MH	Deutz	Linde MH	Deutz	Linde MH	Deutz	Linde MH	
	7.1.1	Type				TCD 2.9 L4	CWT S1	TCD 2.9 L4	CWT S1	TCD 2.9 L4	CWT S1	TCD 2.9 L4	CWT S1	
	7.2	Engine rating to ISO 1585			kW	54	55	54	55	54	55	54	55	
	7.3	Nominal speed			1/min	2200	2200	2200	2200	2200	2200	2200	2200	
	7.4	Number of cylinders				4	4	4	4	4	4	4	4	
	7.4.1	Capacity			cm ³	2900	3600	2900	3600	2900	3600	2900	3600	
7.5	Fuel consumption according to VDI Cycle			l/h kg/h	4.1	3.8	4.3	4.0	4.6	4.3	4.8	4.6		
7.9	On-board voltage		U	V	12	12	12	12	12	12	12	12		
8.1	Drive control					Diesel-electric	Diesel-electric	Diesel-electric	Diesel-electric	Diesel-electric	Diesel-electric	Diesel-electric		
Miscellaneous	10.1	Working pressure for attachments			bar	250	250	250	250	250	250	250		
	10.2	Oil volume for attachments			l/min	30	30	30	30	30	30	30		
	10.4	Volume fuel tank			l kg	56	22	56	22	56	22	56	22	
	10.7	Sound pressure level ² L _{pAZ} (driver's seat)			dB(A)	<75	<76	<75	<76	<75	<76	<75	<76	
	10.7.1	Sound power level LWAZ (work cycle)			dB(A)	<98	<99	<98	<99	<98	<99	<98	<99	
		Human vibrations ³ : in accordance with EN 13059			m/s ²	0.47	0.47	0.47	0.47	0.47	0.47	0.47	0.47	
10.8	Trailer coupling, type/model DIN				Pin	Pin	Pin	Pin	Pin	Pin	Pin	Pin		

¹ With reduced basic load capacity and/or restricted lifting height

² With cab; higher sound level without cab

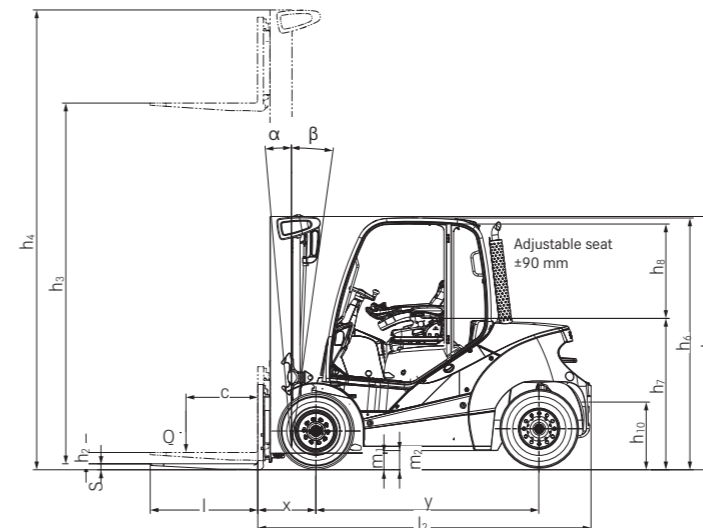
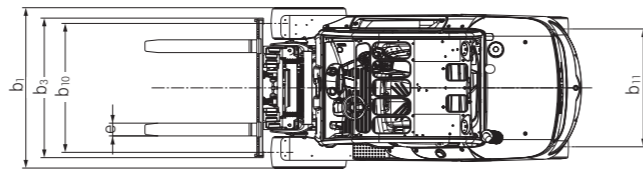
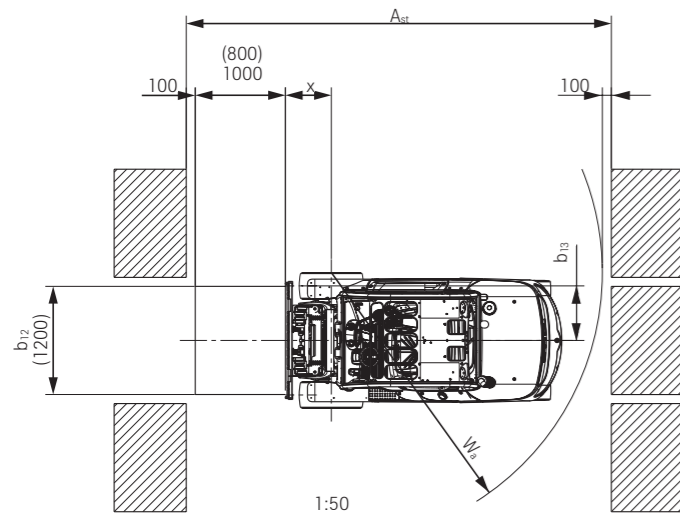
³ With standard driver's seat

RX 70-40/50 Diesel and LPG Forklift Trucks
Mast Tables



		Telescopic mast								Triplex mast										
RX 70-40 - RX 70-40 T	Nominal lift	h_3	mm	2980	3180	3480	3680	4080	4480	4880	4030	4330	4630	5080	5380	5980	6580	7180		
	Overall height	h_1	mm	2300	2400	2550	2650	2850	3050	3250	2150	2250	2350	2500	2600	2800	3000	3200		
	Free lift	h_5	mm	160	160	160	160	160	160	160	1390	1490	1590	1740	1840	2040	2240	2440		
	Maximum height	h_4	mm	3762	3962	4262	4462	4862	5262	5662	4835	5135	5435	5885	6185	6785	7385	7985		
	Tilt of mast/fork carriage	forward/backward	α/β	°	6/7								6/7							
	Fork lock-in position centre-centre		mm	191/368/572/673/978 (fork carriage 1310/1410 mm)/1080 (fork carriage 1410 mm)								191/368/572/673/978 (fork carriage 1310/1410 mm)/1080 (fork carriage 1410 mm)								
	Tyres	front/rear		250-15 (7.00-15 twin tyres) / 250-15								250-15 (7.00-15 twin tyres) / 250-15								
	Track	front/rear	b_{10}/b_{11}	mm	1136 (1364 twin tyres) / 1120								1136 (1364 twin tyres) / 1120							
Maximum width		b_1	mm	1380 (1769 twin tyres)								1380 (1769 twin tyres)								
		Telescopic mast								Triplex mast										
RX 70-45 - RX 70-50 T	Nominal lift	h_3	mm	2980	3180	3480	3680	4080	4480	4880	4030	4330	4630	5080	5380	5980	6580	7180		
	Overall height	h_1	mm	2300	2400	2550	2650	2850	3050	3250	2150	2250	2350	2500	2600	2800	3000	3200		
	Free lift	h_5	mm	160	160	160	160	160	160	160	1238	1338	1590	1740	1840	2040	2240	2440		
	Maximum height	h_4	mm	3987	4187	4487	4687	5087	5487	5887	4987	5287	5587	6037	6337	6937	7537	8137		
	Tilt of mast/fork carriage	forward/backward	α/β	°	6/7								6/7							
	Fork lock-in position centre-centre		mm	191/368/572/673/978 (fork carriage 1310/1410 mm)/1080 (fork carriage 1410 mm)								191/368/572/673/978 (fork carriage 1310/1410 mm)/1080 (fork carriage 1410 mm)								
	Tyres	front/rear		28 x 12.5-15 (7.00-15 twin tyres) / 250-15								28 x 12.5-15 (7.00-15 twin tyres) / 250-15								
	Track	front/rear	b_{10}/b_{11}	mm	1210 (1364 twin tyres) / 1120								1210 (1364 twin tyres) / 1120							
Maximum width		b_1	mm	1506 (1769 twin tyres)								1506 (1769 twin tyres)								
		Telescopic mast								Triplex mast										
RX 70-45 T	Nominal lift	h_3	mm	2980	3180	3480	3680	4080	4480	4880	4030	4330	4630	5080	5380	5980	6580			
	Overall height	h_1	mm	2300	2400	2550	2650	2850	3050	3250	2150	2250	2350	2500	2600	2800	3000			
	Free lift	h_5	mm	160	160	160	160	160	160	160	1238	1338	1590	1740	1840	2040	2240			
	Maximum height	h_4	mm	3987	4187	4487	4687	5087	5487	5887	4987	5287	5587	6037	6337	6937	7537			
	Tilt of mast/fork carriage	forward/backward	α/β	°	6/7								6/7							
	Fork lock-in position centre-centre		mm	191/368/572/673/978 (fork carriage 1310/1410 mm)/1080 (fork carriage 1410 mm)								191/368/572/673/978 (fork carriage 1310/1410 mm)/1080 (fork carriage 1410 mm)								
	Tyres	front/rear		28 x 12.5-15 (7.00-15 twin tyres) / 250-15								28 x 12.5-15 (7.00-15 twin tyres) / 250-15								
	Track	front/rear	b_{10}/b_{11}	mm	1210 (1364 twin tyres) / 1120								1210 (1364 twin tyres) / 1120							
Maximum width		b_1	mm	1506 (1769 twin tyres)								1506 (1769 twin tyres)								
		Telescopic mast								Triplex mast										
RX 70-50/600 - RX 70-50/600 T	Nominal lift	h_3	mm	2780	2980	3280	3480	3880	4280	4680	3730	4030	4330	4730	5080	5680	6280	6880		
	Overall height	h_1	mm	2300	2400	2550	2650	2850	3050	3250	2150	2250	2350	2500	2600	2800	3000	3200		
	Free lift	h_5	mm	160	160	160	160	160	160	160	1130	1230	1330	1480	1580	1780	1980	2180		
	Maximum height	h_4	mm	3887	4087	4387	4587	4987	5387	5787	4795	5095	5395	5845	6145	6745	7345	7945		
	Tilt of mast/fork carriage	forward/backward	α/β	°	6/7								6/7							
	Fork lock-in position centre-centre		mm	191/368/572/673/978 (fork carriage 1310/1410 mm)/1080 (fork carriage 1410 mm)								191/368/572/673/978 (fork carriage 1310/1410 mm)/1080 (fork carriage 1410 mm)								
	Tyres	front/rear		28 x 12.5-15 (7.00-15 twin tyres) / 250-15								28 x 12.5-15 (7.00-15 twin tyres) / 250-15								
	Track	front/rear	b_{10}/b_{11}	mm	1210 (1364 twin tyres) / 1120								1210 (1364 twin tyres) / 1120							
Maximum width		b_1	mm	1506 (1769 twin tyres)								1506 (1769 twin tyres)								

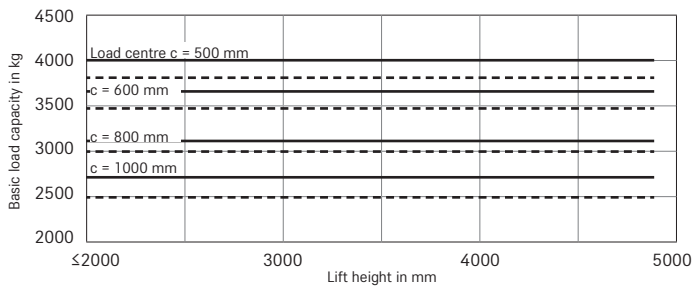
Technical Drawings



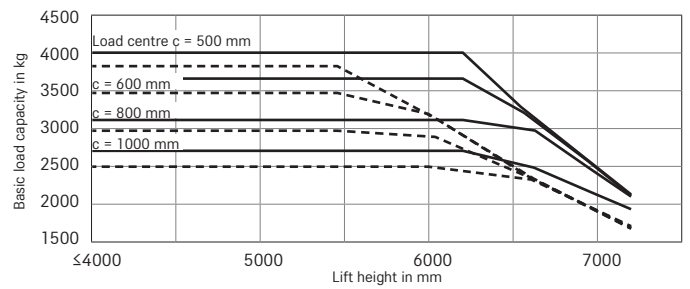
RX 70-40/50 Diesel and LPG Forklift Trucks

Basic Load Capacities

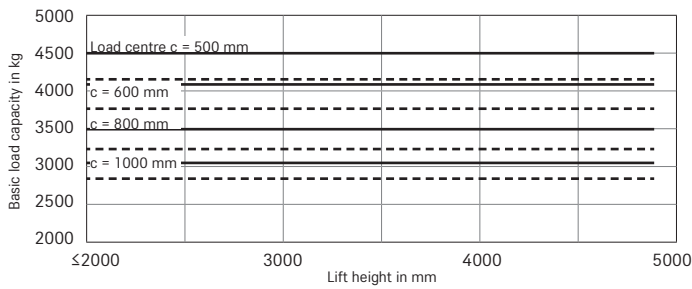
RX 70-40 Telescopic mast
single superelastic tyres



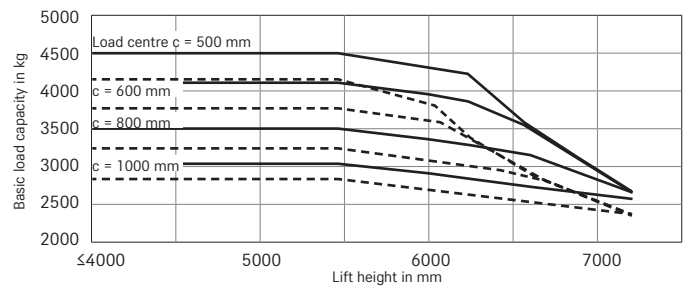
RX 70-40 Triplex mast
single superelastic tyres



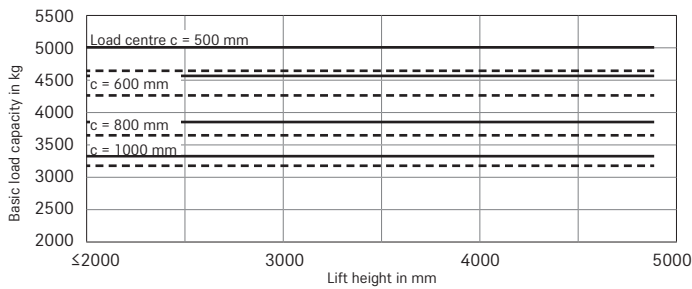
RX 70-45 Telescopic mast
single superelastic tyres



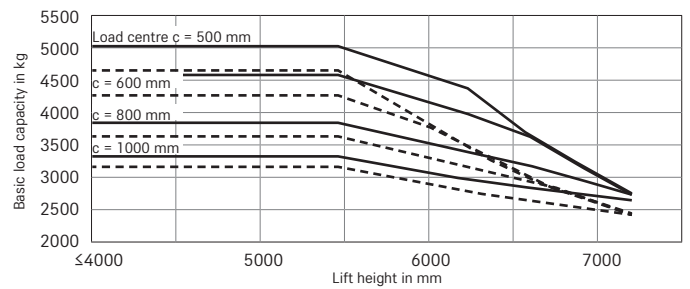
RX 70-45 Triplex mast
single superelastic tyres



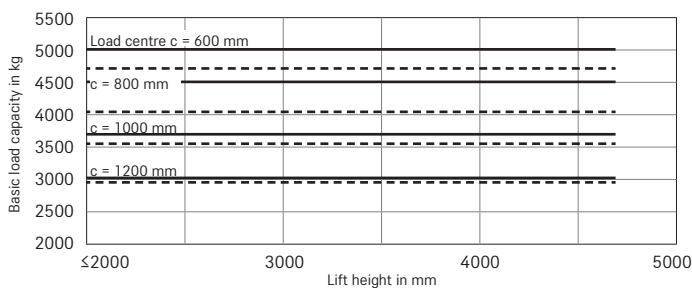
RX 70-50 Telescopic mast
single superelastic tyres



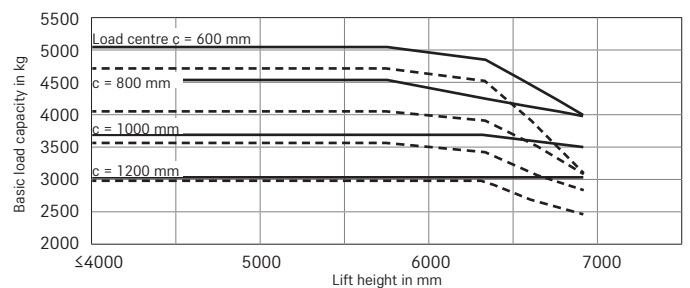
RX 70-50 Triplex mast
single superelastic tyres



RX 70-50/600 Telescopic mast
single superelastic tyres



RX 70-50/600 Triplex mast
single superelastic tyres



— With standard forks - - - With integrated side shifter and standard forks
The values indicated may vary depending on the truck's features

RX 70-40/50 Diesel and LPG Forklift Trucks
The benchmark for efficiency



RX 70-40/50 Diesel and LPG Forklift Trucks
Detailed Photos



Maximum visibility thanks to numerous windows and narrow overhead guard profiles



Additional protective grille roof



Superior comfort thanks to high-quality driver's seat



Narrow mast profiles for excellent visibility of forks and load at all times



Precise and fatigue-free working with the Joystick 4Plus



Wide, unrestricted entry and exit area



Also available as an LPG variant



Good servicing and maintenance access

RX 70-40/50 Diesel and LPG Forklift Trucks

The benchmark for efficiency

High availability, longer service life and low operating costs thanks to diesel-electric drive

Individually adjustable: driving and lifting behaviour can be tailored to operational circumstances and driver preferences

High performance: powerful and efficient drive meets sensitive control



The RX 70-40/50 IC trucks with a load capacity of up to five tonnes have been fitted with a diesel-electric drive. This combines the advantages of a powerful internal combustion engine with the precision of an electric drive, guaranteeing high availability, a longer service life and lower operating costs. With their compact design and high manoeuvrability coupled with sensitive transmission and lifting control, the RX 70-40/50 IC trucks enable top handling performance. The driving and lifting behaviour can be adjusted to operational circumstances or driver preferences. All drive components are encapsulated to provide protection against dust and water penetration.

As a result the trucks are perfect for a range of applications, including indoor and outdoor use in the construction industry, building materials sector and wood processing, the metalworking industry as well as the food and beverages industry. Customers in the logistics and freight-carrier industries also stand to benefit. The bend-proof and torsionally rigid mast allows safe load handling, even for heavy loads with a high residual load capacity. The comfortable driver's cab incorporates the latest ergonomic criteria to combat fatigue and improve safety. Five driving programmes are available. The Blue-Q energy-saving mode cuts energy consumption by 10 per cent with no loss of performance.

The 'Simply Efficient' factors: Performance attributes as a measure of economic efficiency

Simply easy

- Climb in, be comfortable and get going, thanks to the spacious driver's cab with adjustable steering column and premium driver's seat
- Choose from a range of individual control options: mini-lever, Fingertip or Joystick 4Plus
- Enjoy a spacious and comfortable driver's cab that can be individually set up and offers numerous storage compartments

Simply powerful

- Combination of diesel-electric drive and powerful industrial engines ensures high availability, long service life and low operating costs
- Lifting capacity of up to five tonnes with a load centre of 600 mm
- Fast goods handling thanks to driving speeds of up to 21 km/h

Simply safe

- Perfect all-round view thanks to narrow mast profile and large viewing windows on all sides
- Asymmetrically offset driver's seat affords excellent view of load and fork carriage
- Optimum safety and stability thanks to truck's low centre of gravity
- Large, non-slip step and grab handles for high operator safety standards
- Maximum protection for drivers thanks to the robust, rigid and warp-resistant mast
- Sensitive hydraulic controls ensure safe load handling and prevent damage to goods

Simply flexible

- Five driving programmes ensure perfect set-up for every requirement, from maximum handling capacity to optimum efficiency
- Truck settings can be adapted to the operator: speed, acceleration and braking can all be individually set
- Suitable for use throughout Europe: latest exhaust gas regeneration technology ensures emissions are well within Euro 5 standards
- Top handling performance thanks to compact design, excellent manoeuvrability and sensitive driving and lifting controls

Simply connected

- Digital performance boost: optional interface for integration into fleet management software such as STILL neXXt fleet
- Flexible networking options: provision for MMS means the truck can be easily integrated into any material flow management system

RX 70-40/50 Diesel and LPG Forklift Trucks

Equipment Variants

	Impact-absorbing driver's seat for optimal comfort on uneven routes
	Steel protective roof (height approx. 2,325 mm)
	Low protective roof (height approx. 2,215 mm)
	High protective roof (height approx. 2,725 mm)
	Weather protection design in different variants
Driver's cab	Driver's cab
	Tarpaulin cab
	Tinted front windscreen, rear and front windows, windscreen washing/wiping facility
	Single-pedal transmission control
	Double-pedal transmission control
	Built-in storage and cup holder
	Display and function buttons protected from water spray
	Writing pad with clipboard (removable) and light
	Grammer driver's seat with leatherette cover
	Comfortable driver's seat with textile cover and lumbar support
	Exclusive driver's seat with leatherette or textile cover, mechanical or airsprung, extra-wide seat pad, large suspension travel, lumbar support, height-adjustable back extension and headrest
	Horizontal spring plate for driver's seat to minimise human vibrations
	Document pocket on the seat back
	Roof liner with interior lighting
	Radio/MP3 player with USB connection
	Adjustable roof window
	Protective sunshade and sun blind
	Water heating with blower and defroster nozzles for front windscreen and footwell
	Air conditioning
	Mast
Triplex free view mast	
Fork wear protection	
Different fork carriage widths and integrated side shifter	
Load backrest	
Automatic mast vertical position	
Hydraulic accumulator in the lifting cylinder to attenuate pressure peaks in the hydraulic system	
Tyres	Angle of incline 6/7° front/rear incline
	Bellows protect the tilt cylinder from dust and moisture
	Superelastic tyres, SIT system, single or twin
Hydraulics	Superelastic tyres, SIT system, natural colour or anti-static
	Pneumatic tyres, single or twin
	Proportional valve technology for especially sensitive movements
	Joystick 4Plus or Fingertip
	Up to three hydraulic circuits for controlling accessories
Drives	Custom parametrisation of hydraulic functions
	Mini-lever with armrest, two levers
	Mini-lever with armrest, three or four levers
	Five driving programmes for different driving and braking behaviour
	Blue-Q energy-saving mode
	Smooth acceleration and reversing
	Maintenance-free drives for driving, steering and lifting
	Travel and lift drive components enclosed to protect against dust and dirt
	Dry air filter with maintenance indicator
	Additional air filter or cyclone pre-separator
	Gas forklift with LPG cylinders
Brake	LPG tank 70 litres
	Automatic engine shutdown
	Engine preheating via external power connection
Safety	Regulated 3-way catalytic converter
	Diesel particle filter
	Wear-free disc brakes that run in an oil bath
	Electromechanical parking brake
	Hydraulic parking brake
	Forklift has low centre of gravity and steering axle with high self-aligning bearing for optimum levels of safety
	Protective grille roof
	Narrow protective roof profile for an optimum all-round view
	Easybelt restraint system for quick and safe fastening and unfastening
	IWS restraint system with strap opening located on both sides
	Lighting system in halogen or LED design, approvable
	Working lights in halogen or LED design
	Roof window in rear protective roof area, improved visibility when reversing
Flashing warning light	
STILL Safety Light warning device, illuminated blue	
Seat belt control, drive unit only enabled when seat belt is fastened	
Speed limiter adjustable by driver	
Tempomat cruise control	
Load measuring with ±5 per cent precision	
FleetManager: access authorisation, shock detection, reports	

● Standard ○ Optional — Not available



STILL GmbH
Berzeliusstr. 10
22113 Hamburg
Germany
Tel.: +49 40 73 39 20 00
Fax: +49 40 73 39 20 01
info@still.de

For further information please visit
www.still.eu

STILL is certified in the following areas: Quality management, occupational safety, environmental protection and energy management.



first in intralogistics