



**WACKER
NEUSON**
all it takes!

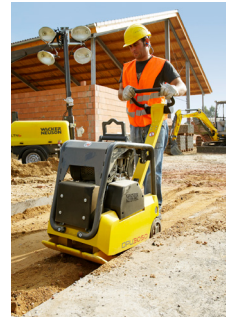


Plate Compactors

BPU4045A

Reversible Plate Compactor 332kg

Wacker Neuson BPU4045A: High-power reversible plate compactor ideal for big jobs: delivers a whopping 332kg of compaction force.



- Extra-strong compaction force of 332kg: Handles tough jobs like compacting soil, gravel, and asphalt on large projects.
- Reversible design: Maneuvers easily in confined spaces, improving efficiency.
- Ideal for heavy-duty compaction: Suitable for large projects requiring high compaction force.
- Durable construction: Built to withstand tough worksites.
- Ease of use: Ensures operator comfort and reduces fatigue during long operating hours.

Specifications

- Model - BPU4045a
- Item No.- 5100009663
- Engine - Honda GX270
- Power - 8.0Hp
- Weight - 339kg
- Operating Width - 450mm/604mm
- Force - 40kN

The Wacker Neuson BPU4045A is a heavy-duty reversible plate compactor designed to tackle demanding compaction tasks. Its powerful 332kg compaction force ensures effective compaction of soil, gravel, and asphalt on large projects. The reversible design allows for efficient maneuvering, especially in tight spaces.