

5 years /
5,000 hours
warranty



**WACKER
NEUSON**
all it takes!

TH740

Telehandler



Telehandler TH740 - A powerful and functional all-rounder

The TH740 telehandler impresses with a 4 metric ton payload and 7 m stacking height. The hydrostatic drive system, which allows travel speeds of up to 40 km/h without switching gears, makes quick and comfortable handling work possible. The cabin provides the operator a high level of comfort and, due to the color coding of the control elements, safe operation is guaranteed.



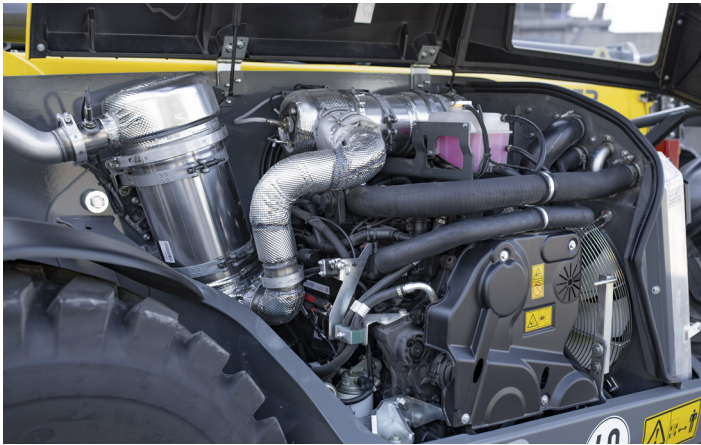
Four types of steering for maximum flexibility

- 1. All-wheel steering:** full manoeuvrability and control in the smallest area.
- 2. Front-wheel steering:** for safe driving, even at higher speeds.
- 3. Crab steering:** sideways driving for ultra-precise manoeuvring in tight spaces.
- 4. Manual crab steering:** easy guidance of special attachments



All-round visibility

The TH740's cabin provides a good overview of the attachment, the immediate work area and the entire machine environment. The deep side window on the right and the high seating position, in combination with the sloping engine hood, ensure optimal visibility. This is particularly important in order to work effectively and safely at heights with the telehandler.



Optimum ease of servicing

The engine bonnet can be opened wide using just one handle for regular service and maintenance jobs. The hydraulic oil tank, air filter, engine oil filling, oil-level dipstick and coolant are therefore quickly and easily accessible. Service jobs can be quickly and easily executed, in turn automatically maximising the machine's availability, which again reduces the overall operating costs.

7" LCD display

- All relevant machine data at a glance summarised on the display
- Operating and setting the machine's parameters easily and intuitively using the jog dial
- Safe jog dial operation possible, even when driving

Technical Information

	Units	TH740
Mechanical – Output Details		
Travel speed stage 1	km/h	0-40
Mechanical Details		
Length	mm	4,880
Width	mm	2,285
Height	mm	2,490
Operating weight	kg	6,810 - 7,850
Payload max.	kg	4,000
Payload lift max.	kg	2,400
Lift max.	mm	7,000
Steering and Hydraulics		
Operating pressure	bar	260
Flow rate	l/min	140
Tank capacity	l	100
Mode of function of steering system		Hydrostatic 4 wheel steering
Steering modes		4 wheel steering / front-wheel steering / crab steering / manual crab steering

	Units	TH740
Maximum steering angle	°	2 x 38
Work pump		Load-sensing axial-piston pump
Operating fluids		
Hydraulic fluid volume	l	100
Fuel tank capacity	l	180
Chassis		
Turning radius outer edge bucket	mm	5,000
Turning radius outer edge wheels	mm	3,840
Engine		
Cylinder		4
Cylinder capacity	cm³	3,621
Power rating max.	kW	100
Engine speed (power max.)	1/min	
Engine type		Common rail
Fuel type		Diesel
Exhaust after treatment		DOC/DPF/SCR
Manufacturer		Deutz
Engine designation		TCD 3.6 L4

The images, equipment and data shown may differ from the range of products currently available in your country. Optional equipment may be shown under certain circumstances subject to a surcharge in the price. The right to make any changes is reserved.