

ECH 12C/15C Technical Data

Low Lift Pallet Trucks

ECH 12C/Li-Ion

ECH 15C/Li-Ion



ECH 12C/15C Low Lift Pallet Trucks

Innovation in Motion

This specification sheet, which conforms to VDI guideline 2198, provides the technical values for the standard equipment only. Different tyres, other masts, the use of accessories, etc. may result in other values.



Features	1.1	Manufacturer			STILL	STILL
	1.2	Manufacturer's model designation			ECH 12C	ECH 15C
	1.3	Drive			Electric	Electric
	1.4	Operation			Pedestrian	Pedestrian
	1.5	Load capacity/load	Q	kg	1200	1500
Weights	1.6	Load centre	c	mm	600	600
	1.8	Load distance	forks lifted/lowered	x	mm	950/880
	1.9	Wheel base	y	mm	1190 (1120) ¹	1190 (1120) ¹
	2.1	Service weight (incl. battery)		kg	115	115
	2.2	Axle load, laden	drive end/load end	kg	540/1075	540/1075
Tyres/chassis	2.3	Axle load, unladen	drive end/load end	kg	100/15	100/15
	3.1	Tyres			Polyurethane	Polyurethane
	3.2	Tyre size	drive end	mm	Ø 210 x 70	Ø 210 x 70
	3.3	Tyre size	load end	mm	Ø 80 x 60	Ø 80 x 60
	3.4	Support roller size		mm	-	-
Dimensions	3.5	Number of wheels (x = driven)	drive end/load end		1x/2 (1x/4) ²	1x/2 (1x/4) ²
	3.6	Track width	drive end/load end	b ₁₀ /b ₁₁	mm	410 (535)
	4.4	Lift		h ₃	mm	115
	4.9	Tiller handle height in driving position		h ₁₄	mm	750/1190
	4.15	Fork height, lowered		h ₁₃	mm	80
Performance	4.19	Overall length		l ₁	mm	1550
	4.20	Length including fork backs		l ₂	mm	400
	4.21	Total width		b ₁	mm	560 (685) ¹
	4.22	Fork dimensions	DIN ISO 2331	s/e/l	mm	50/150/1150
	4.25	Overall fork width	min./max.	b ₅	mm	560 (685)
Electric engine	4.32	Ground clearance, centre of wheel base		m ₂	mm	30
	4.33	Working aisle width with 1000 x 1200 pallet crosswise		A _{st}	mm	2193
	4.34	Working aisle width with 800 x 1200 pallet lengthways (b ₁₂ x l ₆)		A _{st}	mm	2062
	4.35	Turning radius		W _a	mm	1390
	5.1	Travel speed	laden/unladen	km/h	4/4.5	4/4.5
Misc.	5.2	Lifting speed	laden/unladen	m/s	0.017/0.024	0.017/0.024
	5.3	Lowering speed	laden/unladen	m/s	0.09/0.06	0.09/0.06
	5.8	Max. gradeability kB 5	laden/unladen	%	6/16	6/16
	5.10	Service brake			Electromagnetic	Electromagnetic
	6.1	Drive motor, rating S2 = 60 min		kW	0.75	0.75
Electric engine	6.2	Lift motor, rating at S3		kW	0.5	0.5
	6.3	Battery according to DIN 43531/35/36; A, B, C, no			Li-Ion	Li-Ion
	6.4	Battery voltage/rated capacity K _s		V/Ah	24/20	24/20
	6.5	Battery weight ±5 % (depends on make)		kg	5	5
	6.6	Energy consumption according to VDI cycle		kWh/h	0.274	0.274
Misc.	8.1	Drive control			DC control	DC control
	8.4	Sound pressure level at driver's ear		dB(A)	<74	<74

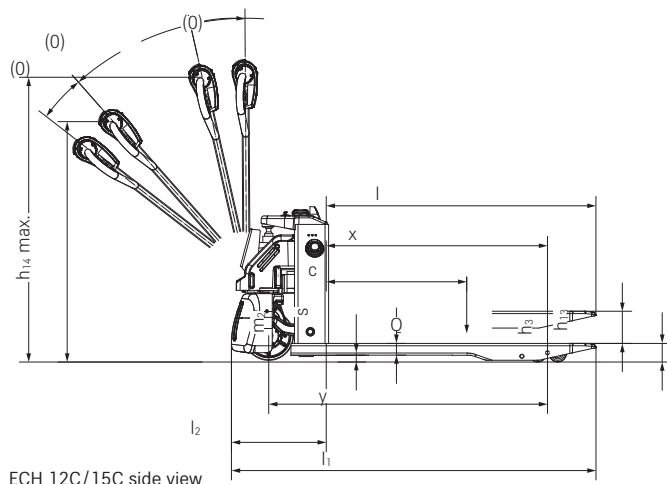
¹ For an overall fork width of 685 mm

² With tandem rollers

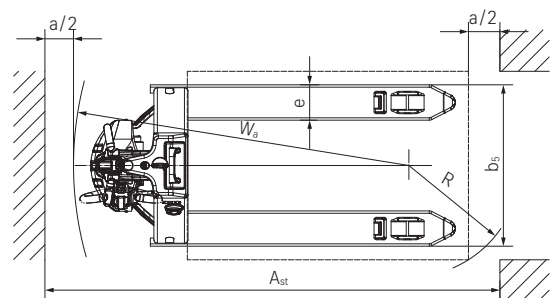
Battery power and charging times

ECH 12C/ ECH 15C	Batteries					Charging time
	Capacity	Voltage	Technology	Weight	Operating time	Standard charger
	20 Ah	24 V	Li-Ion	5 kg	Up to 120 min	2 h

Technical Drawings



ECH 12C/15C side view



ECH 12C/15C top view

ECH 12C and ECH 15C Low Lift Pallet Trucks

Innovation in Motion

Smart alternative to hand pallet trucks: Compact truck dimensions, low service weight, maintenance-free lithium-ion battery

Ready for use at all times thanks to the lithium-ion battery, which can be quickly and easily charged or interim charged from a power socket via Plug & Play

Safe and efficient even in confined spaces: The creep speed switch enables safe manoeuvring even with the tiller in an upright position



ECH 12C/ECH 15C

The ECH 12C/ECH 15C is the ideal alternative to the hand pallet trucks. Its compact dimensions and low service weight of just 115 kilos make it the perfect partner for horizontal freight transport over short, level routes and in confined spaces. Whether in goods lifts, on sales floors or in racking aisles, the ECH 12C/15C is light, agile and safe, and, thanks to the creep speed switch, extremely manoeuvrable even with the tiller in an upright position. All this ensures its high efficiency and

flexibility even in areas with little space for manoeuvring. In addition, the lithium-ion battery provides maximum availability, as the battery can be charged and interim charged at any time at a power socket via the external charger. The ECH 12C/15C also offers a high level of user convenience. Thanks to the electric drive and the ergonomic tiller, loads up to 1,200/1,500 kg can be moved without fatiguing the operator, while conserving power in the process.



Flexible use even in freight lifts or on mezzanine floors thanks to the low service weight



Unrivalled availability thanks to lithium-ion battery for fast interim charging



The low-level chassis and sturdy frame construction ensure particularly reliable and safe goods transport



Agile, safe and manoeuvrable even in confined spaces. Thanks to the compact size and integrated creep speed switch

ECH 12C/15C Low Lift Pallet Trucks

The 'Simply Efficient' factors: Performance attributes as a measure of economic efficiency



Simply easy

- Easy and fatigue-free manoeuvring thanks to electric drive and lift motor
- Fatigue-free operation: Easy-grip tiller for left and right-handed operators
- Real-time information: The battery status is indicated by an LED light (green, yellow, red)



Simply powerful

- Impressive goods handling: Lifting capacity of 1,200 to 1,500 kg
- Always ready for use: Additional replacement battery maximises availability
- Durable: Sturdy frame construction
- High performance: Powerful and low-maintenance drive motor



Simply safe

- Safe operation: Optimally dimensioned and positioned impact plate
- Improved operator health: No exhaust emissions thanks to maintenance-free battery technology



Simply flexible

- Suitable for almost any application thanks to compact dimensions
- Different fork dimensions available for different load carriers



Simply connected

- Seamless interaction: The li-ion batteries with battery management system interact with the truck

Equipment Variants



		ECH 12C/ ECH 15C
General	Powerful drive motor	●
	Easy-grip tiller for ergonomic operation	●
	Multifunction display	—
	LED lights for the battery charge status	●
	Various fork sizes	●
	Sturdy frame construction	●
Tyres	Tyres for slippery floors	—
	Load roller tyres, single	●
	Load roller tyres, tandem	○
Safety	Easy-to-reach emergency stop button	●
	Sensitive impact plate for high levels of operational safety in confined spaces	●
	Maintenance-free battery technology	●
Battery	Additional battery	○
	External charger	●
	Built-in charger for charging on-the-spot	—
	Various types of mains plugs	○

● Standard ○ Option — Not available



STILL GmbH

Berzeliusstr. 10

22113 Hamburg

Germany

Tel.: +49 40 73 39 20 00

Fax: +49 40 73 39 20 01

info@still.de

For further information please visit

www.still.eu

STILL is certified in the following areas: Quality management, occupational safety, environmental protection and energy management.

