



**WACKER  
NEUSON**  
*all it takes!*

## ST11

### Compact Track Loader

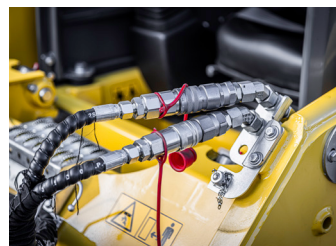
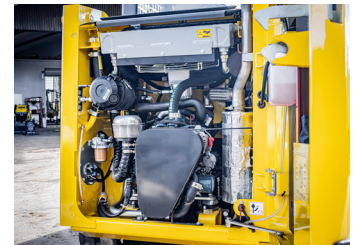


## Versatility is the real driver of this machine.

The versatile ST11 Compact Track Loader is an excellent addition to any hire or contractor fleet and is the perfect fit for landscaping projects, light site work, grading, auguring, general material handling and much more!

### Key Features of the ST11.

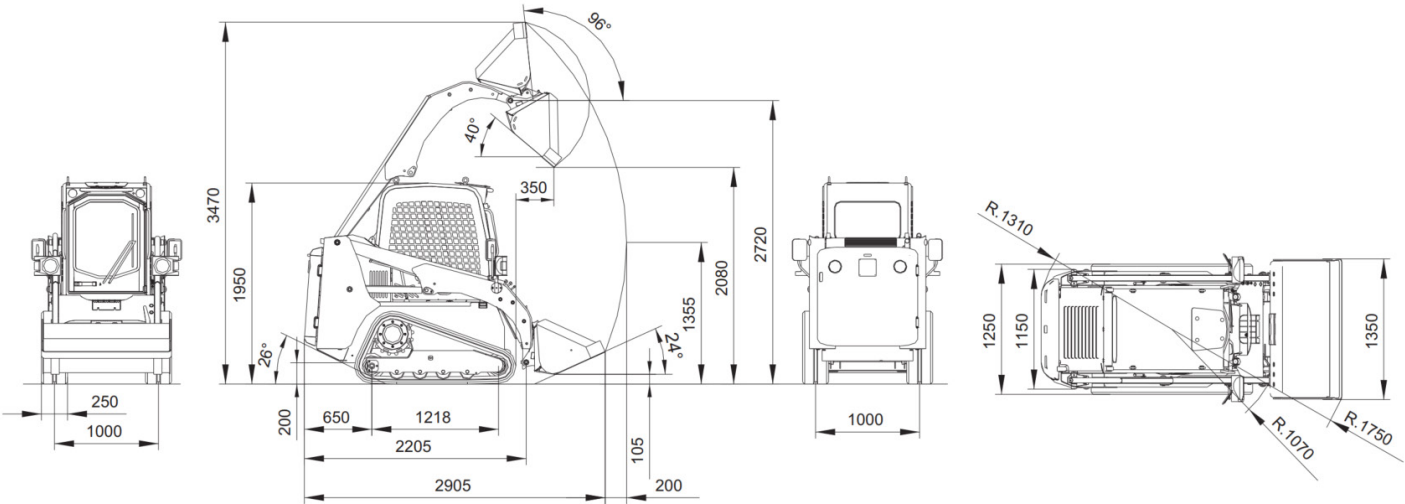
- Diesel engine Turbo Kubota V1505T, 4 cylinders.
- Dual travel speed up to 10 km/h.
- Idle wheels with taper roller bearings giving high carrying capacity fitted with fork bolted on the spring to improve its resistance and track-guide.
- ROPS FOPS 1st stage – open cab.
- Flat faced couplers for fast attachment changes.
- Floating valve to equalize the bucket to ground level.
- Bucket quick hitches.
- Front working lights.
- Reverse motion alarm.



ST11 Technical Information.

	Units	ST11
Rated Operating Capacity @ 35 %	kg	400
Break-out force	daN	930
Operating weight	kg	2,220
Travel speed I / II	km/h	4.5 / 10
Operating pressure – ground	bar	180
Lifting force (from ground)	daN	1030
Pressure – auxiliary	l/min / bar	39
Engine/Motor		Kubota Diesel Engine V1505T
Power	hp	41
Fuel tank capacity	litres	42

ST11 Dimensions.



Dimensions in mm