

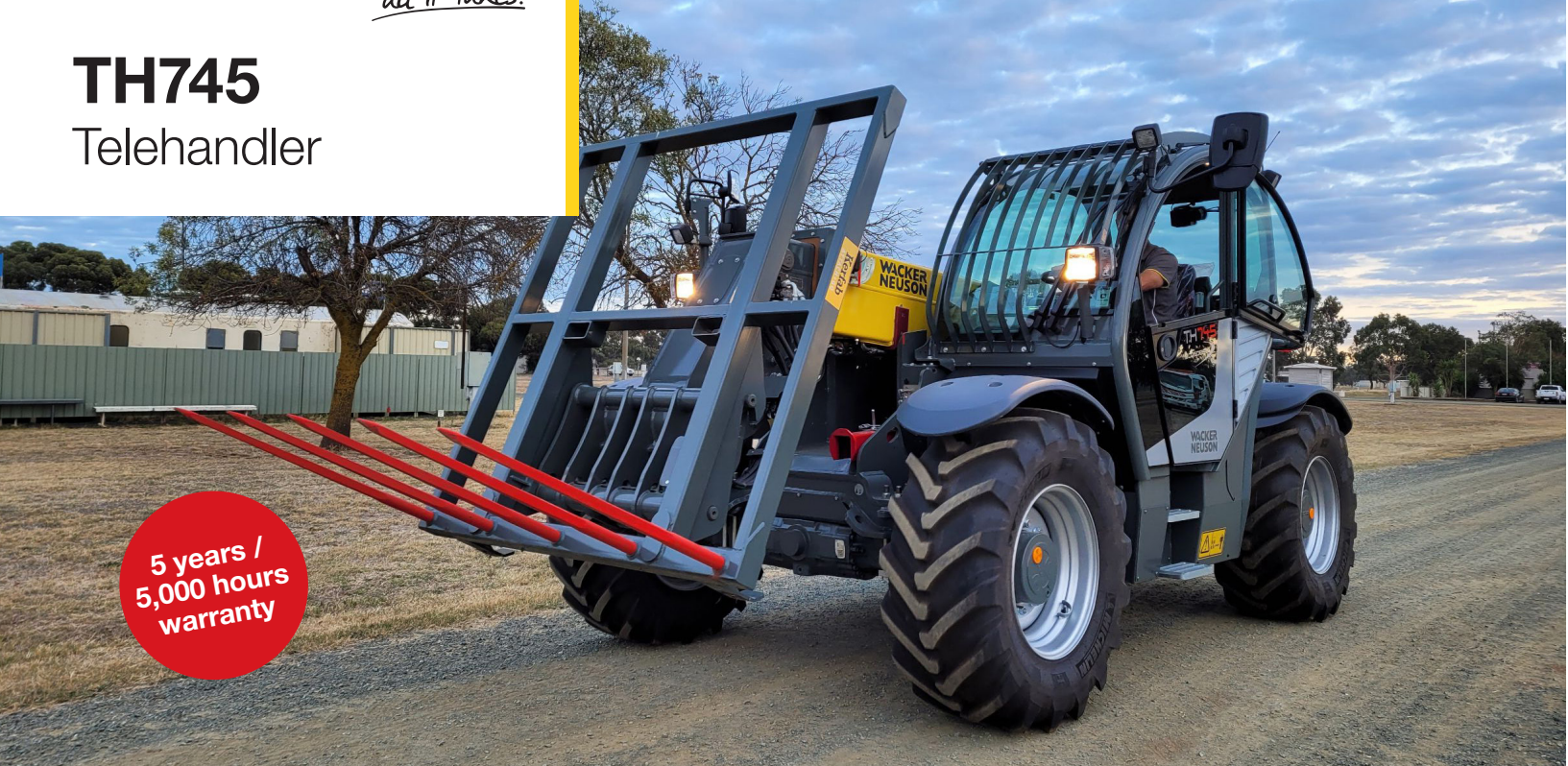


**WACKER
NEUSON**
all it takes!

TH745

Telehandler

5 years /
5,000 hours
warranty



Telehandler TH745 - Versatile & robust for the toughest applications

The Wacker Neuson TH745, specially designed for the construction and rental markets, is a versatile and powerful telescopic handler for the most demanding applications. The payload of 4.5 t and the stacking height of 7 m ensure top performance of the vehicle. Designed for high handling performance, the machine absorbs transverse forces through the lateral support of the telescopic arm during pushing operations with the loading system lowered. The powerful traction drive enables trailer loads of up to 20 t and a top speed of up to 40 km/h.



Four types of steering for maximum flexibility

- 1. All-wheel steering:** full manoeuvrability and control in the smallest area.
- 2. Front-wheel steering:** for safe driving, even at higher speeds.
- 3. Crab steering:** sideways driving for ultra-precise manoeuvring in tight spaces.
- 4. Manual crab steering:** easy guidance of special attachments

All-round visibility

The TH745 has excellent all-round visibility thanks to the large glass surfaces and narrow cab pillars. Panoramic windshield for an optimum view of the attachment.



Colour coded switches

- Uniformed colour scheme for hydraulic, electric, driving and safety features.
- Increased safety due to minimised danger of mixing up switches.
- Operating concept that reaches across all models to simplify the handling of the fleet.



7” LCD display

- All relevant machine data at a glance summarised on the display
- Operating and setting the machine's parameters easily and intuitively using the jog dial
- Safe jog dial operation possible, even when driving

Technical Information

	Units	TH745
Mechanical – Output Details		
Travel speed stage 1	km/h	0-40
Mechanical Details		
Length	mm	5,600
Width	mm	2,500
Height	mm	2,570
Operating weight	kg	8,100 - 9,100
Payload max.	kg	4,500
Payload lift max.	kg	3,300
Lift max.	mm	7,017
Steering and Hydraulics		
Operating pressure	bar	260
Flow rate	l/min	187
Tank capacity	l	100
Mode of function of steering system		Hydrostatic 4 wheel steering
Steering modes		4 wheel steering / front-wheel steering / crab steering / manual crab steering

	Units	TH745
Maximum steering angle	°	2 x 38
Work pump		Load-sensing axial-piston pump
Operating fluids		
Hydraulic fluid volume	l	100
Fuel tank capacity	l	180
Chassis		
Turning radius outer edge bucket	mm	5,265
Turning radius outer edge wheels	mm	4,240
Engine		
Cylinder		4
Cylinder capacity	cm³	3,621
Power rating max.	kW	100
Engine speed (power max.)	1/min	
Engine type		Common rail
Fuel type		Diesel
Exhaust after treatment		DOC/DPF/SCR
Manufacturer		Deutz
Engine designation		TCD 3.6 L4

The images, equipment and data shown may differ from the range of products currently available in your country.
Optional equipment may be shown under certain circumstances subject to a surcharge in the price. The right to make any changes is reserved.